

SECTION 36, T.8N., R.1E., S.L.B. & M.

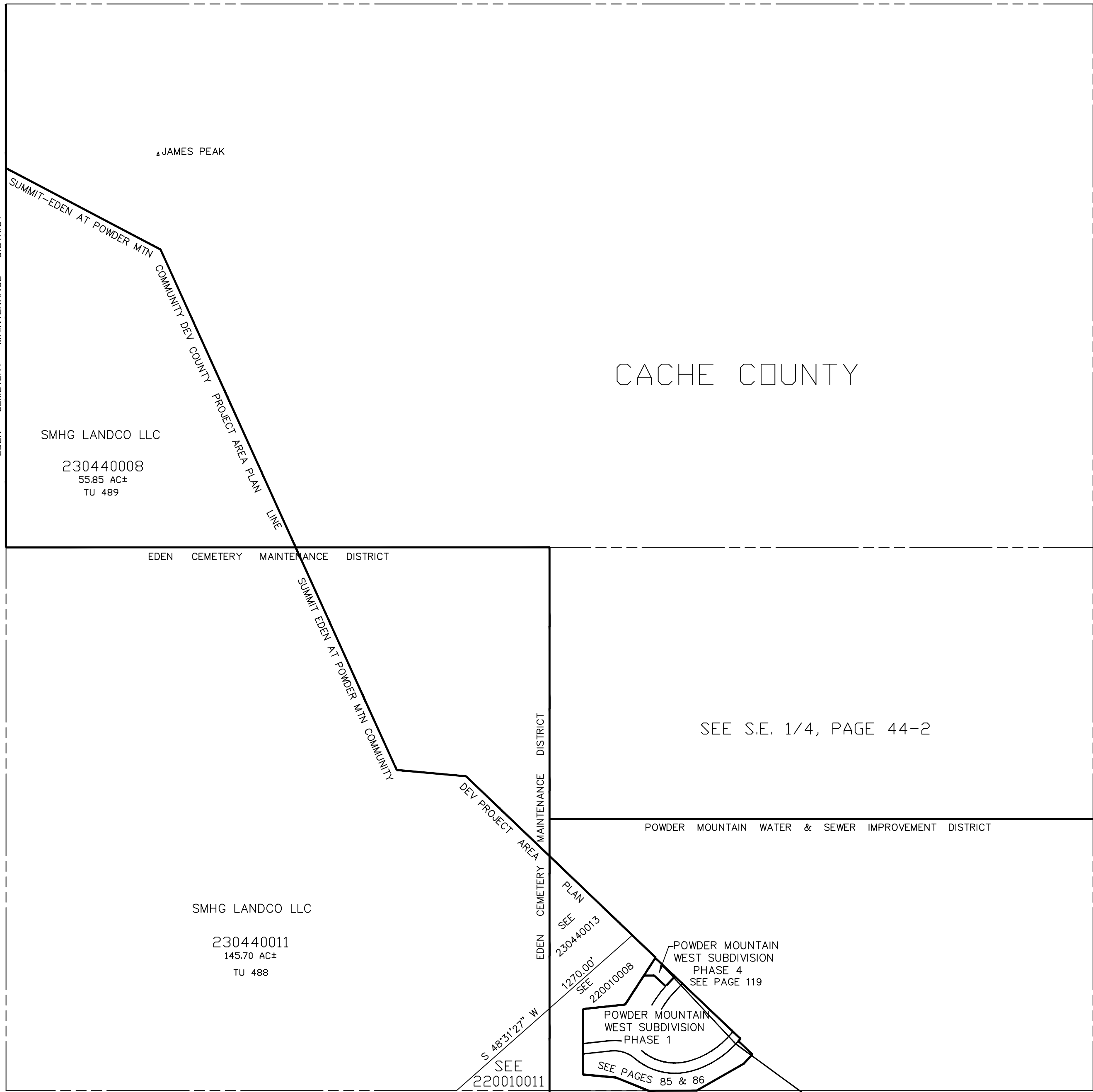
44-1

IN WEBER COUNTY

SCALE 1" = 400'

TAXING UNIT: 488, 489

SEE PAGE 44



SEE PAGE 44

SEE PAGE 45

SEE S.E. 1/4, PAGE 44-2

NOTE: WEBER/CACHE ASSESSMENT LINE CHANGED TO COUNTY LINE - 1995

SEE BOOK 22, PAGE 1-1